

An underwater photograph of a fish, likely a rockfish, swimming in clear blue water. The fish is positioned in the center-right of the frame, facing left. It has a dark, mottled pattern on its back and a lighter, silvery belly. To the left of the fish is a large, vertical, green, feathery seaweed stalk. To the right is a brown, textured seaweed stalk. The background shows more seaweed and the faint outlines of other fish in the distance.

Oregon Fish & Wildlife Commission
December 7, 2018
Exhibit H

Nearshore Logbook Report
Commercial & Recreational
Groundfish Regulations

Maggie Sommer
Marine Resources Program



Issue 1. 2017 Commercial Nearshore Logbook Report (Informational)



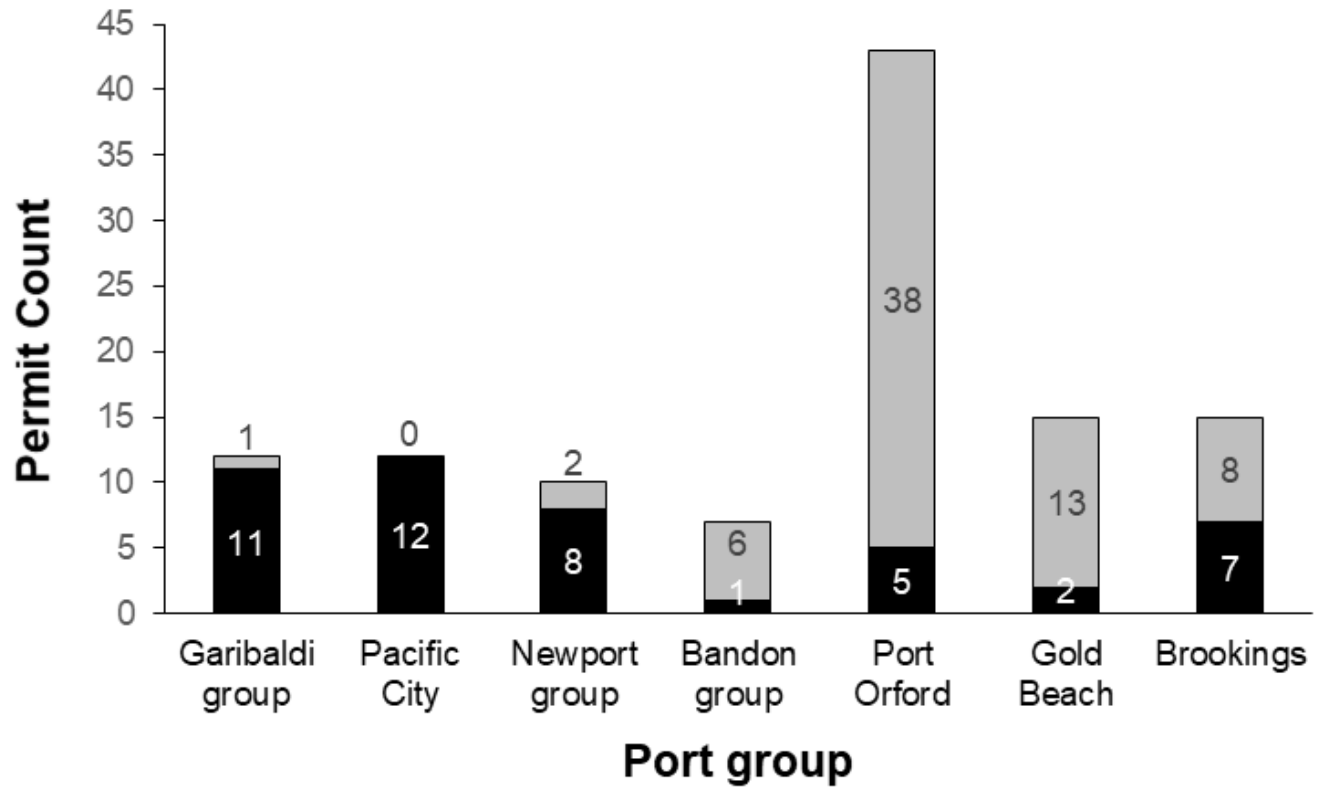
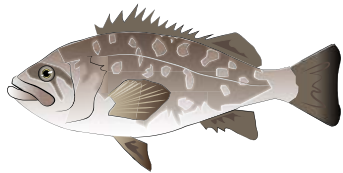
<http://www.dfw.state.or.us/MRP/publications/>

2017 Permit home port

Geographic distribution of comm. nearshore fishing activity

46 black/blue rockfish permits without nearshore endorsement

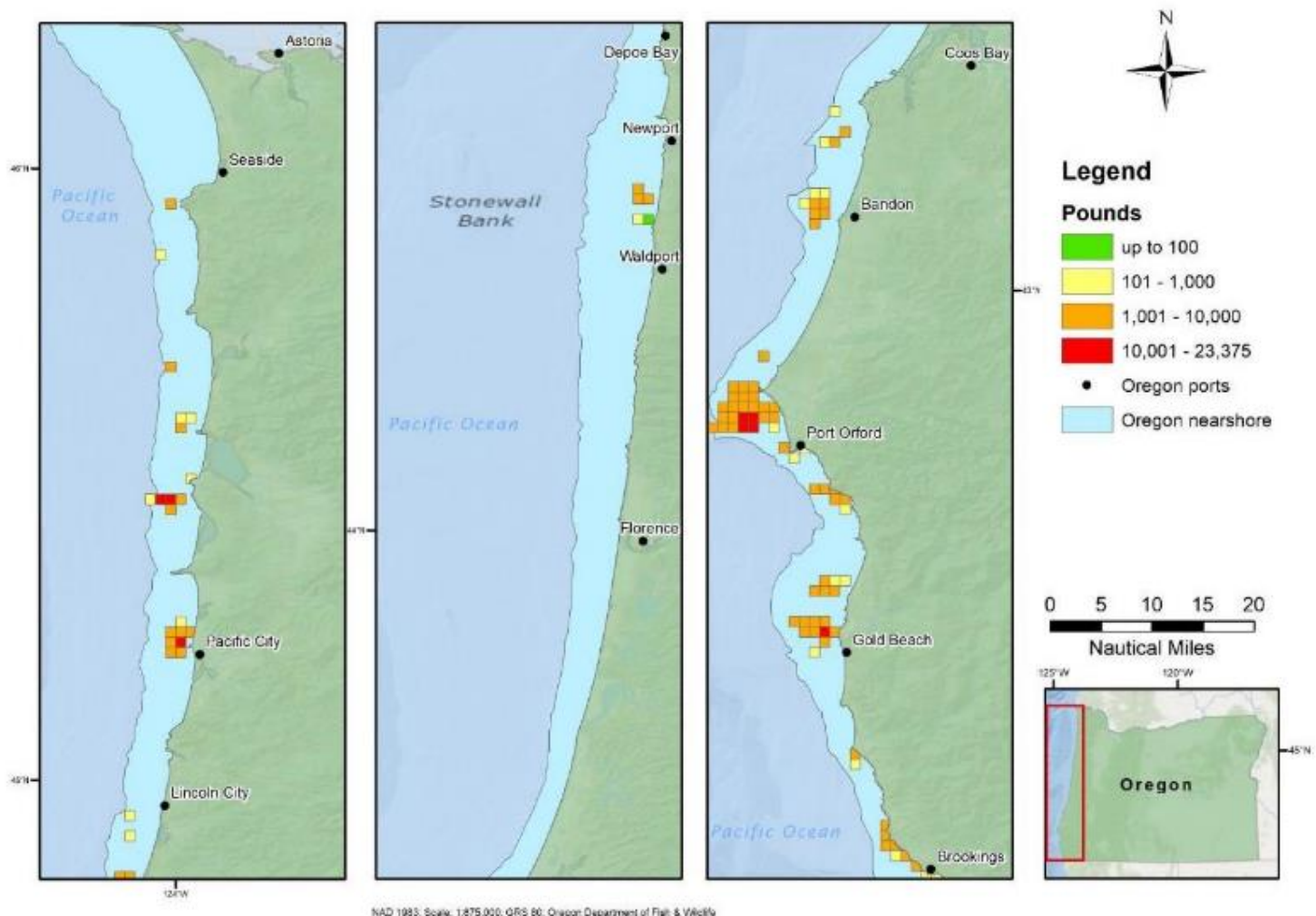
68 with NS endorsement





2017 Summarized nearshore logbook catch by block

Geographic distribution of comm. nearshore catch



NAD 1983, Scale: 1:875,000, GRS 80, Oregon Department of Fish & Wildlife



2017 Comm. nearshore logbook return rate

Nearshore landings (Ticket lbs.), number of trips submitting logs (Submissions), and logbook return rate (Compliance)

Year	Tickets lbs	Submissions	Compliance
2017	595,585	2,443	93%
2016	468,955	2,070	83%
2015	569,958	2,575	90%
2014	491,674	2,141	84%
2013	531,488	2,644	96%
2012	483,373	2,418	95%
2011	464,364	2,478	95%
2010	425,743	2,037	83%
2009	549,626	1,920	64%
2008	472,438	1,790	69%
2007	438,244	1,697	71%
2006	389,390	1,949	80%
2005	421,246	2,264	84%



Issue 2. 2019 Groundfish fishery regulations (Commission action)

- Federal harvest specifications & management measures
- State harvest guidelines
- Commercial nearshore regulations
- Recreational groundfish (bottomfish) regulations

Acronyms

ACL: Annual Catch Limit

HG: Harvest Guideline

MT: Metric Tons

NMFS: National Marine Fisheries Service

PMFC: Pacific Fishery Management Council

RF: Rockfish

SAC: Sportfishing Advisory Committee



2019 Federal regulations

Groundfish.....	1
Coastal Pelagic Species.....	3
Highly Migratory Species.....	3
Administrative.....	6
Upcoming Meetings.....	7
Next Council Meeting.....	8

Groundfish

2019-2020 Groundfish Management Measures Adopted

- Commission action: adopt federal rules for 2019-2020 groundfish fisheries by reference
- Annual catch limits and management measures were adopted by PFMC in Apr & Jun 2018; approved by NMFS for publication in Federal Register
- Full details at:
 - https://www.pcouncil.org/wp-content/uploads/2018/05/Newsletter-Spring-2018-final_nolines.pdf
 - <https://www.pcouncil.org/wp-content/uploads/2018/06/Newsletter-Summer-2018-final.pdf>
- New and notable: 5 items on following slides

Notable changes in federal rules from 2018 (Informational)



- Black rockfish ACL ↓ 0.6% to 516 mt in 2019, as scheduled
- Blue/Deacon RF: first-time ACL = 101 mt (prior limit was 26)
- New “stock complexes”: black + blue/deacon rockfish, and cabezon + greenling
 - Benefits: reduced risk of complete fishery closure, because each component of a complex is managed to a “soft limit”
- Yelloweye rockfish ACL more than doubles
- Recreational fishing allowed at all-depths in more months
 - New fed rules: depth restriction in Jun-Aug (instead of Apr-Sep)
 - **However**, NOTE staff recommendation for May-Sept, consistent with precautionary approach to phasing in regulations that will result in higher yelloweye rockfish impacts to ensure that continued rebuilding is not jeopardized





2019 State harvest guidelines

- **Commission action:** adopt commercial nearshore and recreational harvest guidelines (HGs)
- Purpose: allocate total Oregon quotas to each sector
- Shares have been based on proportions used since the early 2000's, with minor housekeeping adjustments
- Staff recommend status quo proportions for 2019, except for the following changes related to the stock complex reorganization:
 - Establish HGs for blue/deacon rockfish for the first time
 - For remaining minor nearshore rockfish species, return to the proportions used before blue/deacon were added to this group for state HG accounting in 2015



Recommended 2019 harvest guidelines (metric tons) with 2016-2018 for reference

Stock	2016	2017	2018	2019
Black rockfish				
Commercial HG (24.0%)	139.2	126.3	124.7	123.8
Recreational HG (76.0%)	440.8	400.1	394.7	392.2
Blue/deacon rockfish				
Commercial HG (18.6%)	NA	NA	NA	18.9
Recreational HG (81.4%)	NA	NA	NA	82.6
Nearshore rockfish				
Commercial HG (51.3%)	NA	NA	NA	12.3
Recreational HG (48.7%)	NA	NA	NA	11.7
Cabezon				
Commercial HG (64.3%)	30.2	30.2	30.2	30.2
Recreational HG (35.7%)	16.8	16.8	16.8	16.8
Greenling				
Commercial HG (75.1%)	23.4	169.9	144.3	128.5
Recreational HG (24.9%)	5.2	56.3	47.9	42.6



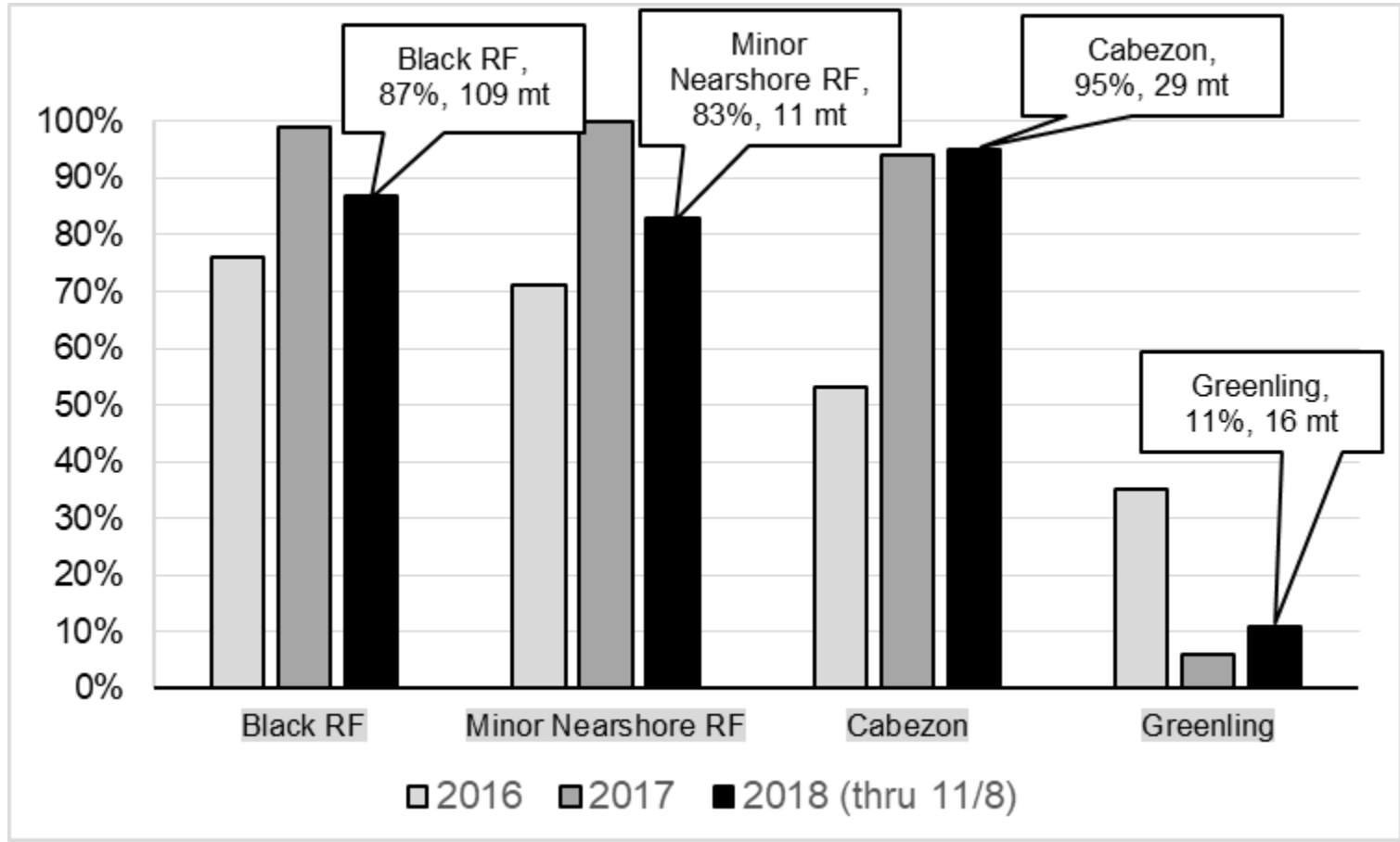
2019 Commercial nearshore fishery regulations

- **Commission action:** adopt 2-month trip limits for the commercial nearshore fishery in 2019
- Public input
 - Public meetings in Brookings, Port Orford, Pacific City (18 participants)
 - Individuals contacted Marine Resources Program staff
 - Written comment to the Commission
- Goals:
 - Stability and predictability
 - Year-round season
 - Trip limits should provide opportunity to harvest the full commercial HG's while meeting industry goals



Recent trip limit performance

Commercial harvest guideline attainment, 2016 - 2018





2019 Commercial nearshore trip limits

Staff recommendation:

Species group	2018 Outset	2018 w/ In-season changes	2019
Black RF			
P1	1,500	1,500	1,500
P2	1,500	1,500	1,500
P3	1,800	1,500	1,800
P4	1,800	1,800	1,800
P5	1,500	2,100	1,500
P6	1,500	2,100	1,500
Blue/Deacon RF			
P1 – 2	300	300	1,500
P3 – 6	300	100	
Other NS RF			
P1 – 2	450	450	450
P3 – 6	450	250	
Cabezon			
P1 – 2	2,000	2,000	
P3	2,500	1,500	1,000
P4 – 5*	2,500	500	
P6*	2,000	45	
Greenling			
P1 – 4	800	800	1,000
P5 – 6	800	1,000	

*15 lb daily limit for cabezon implemented 10-05-2018 (mid P5)

Recreational groundfish fishery

1. Informational: review 2018 season
2. Commission action: adopt 2019 rules





2018 Season setup



2018 Bottomfish Fishery Goals

- Predictability & stability – avoid unplanned closure
- Year-round opportunity
- Consider public needs in developing marine fish bag limits
- Offer new offshore longleader fishery with higher bag limit
- Continue flatfish fishing at all depths
- Keep lingcod open in the fall if possible

22

Key items adopted by Commission:

- **5 fish general marine fish bag limit** (high-risk in staff analysis)
- **New offshore “longleader” fishery**
 - Seaward of 40 fathoms, year round
 - 10 fish bag limit for select midwater rockfish species only

Other rules status quo from 2017

- Flatfish, lingcod, cabezon, depth restriction, etc.



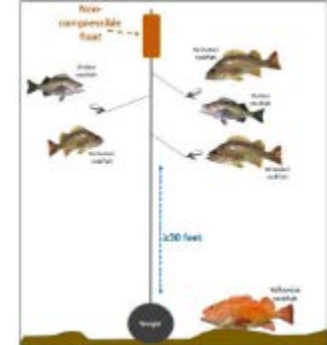
2018 Season progress

- Spring: Unusually high effort; 4 quotas projected to be met before end of the year. Consulted SAC, ↓ bag to 4 fish eff. July 1 to ensure no closure.
- Summer: Slightly lower effort & black RF catch than expected. Cabezon encounters unusually high since start of year, closed August 17.
- Fall: Black RF projection well below quota, but yelloweye over. PFMC OK'ed overage. Bag limit ↑ to 5 fish effective Sept. 19.

Overall: Open all year, fall all-depth season intact

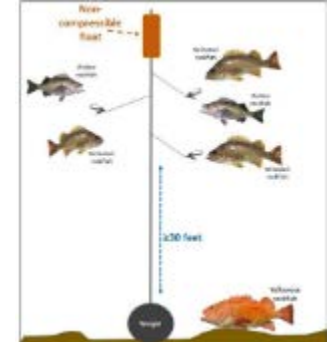
- Bag limit reduction necessary to limit catch of minor nearshore and yelloweye RF. Longleader fishery a valuable addition/substitute in some ports.

SPECIES	YEAR-END PROJECTION, data thru May	YEAR-END PROJECTION, data thru Jul.	YEAR-END PROJECTION, data thru L.D.	YEAR-END PROJECTION, data thru Oct.	LIMIT
BLACK RF	385.7	299.6	295.4	281.1	381.5
CABEZON	18.7	17.3	13.4	13	16.1
NEARSHORE RF	38.1	31.2	32.9	33.8	32.8
YELLOWEYE RF	3.2	3	3.5	3.7	3



2018 Longleader fishery: charter effort

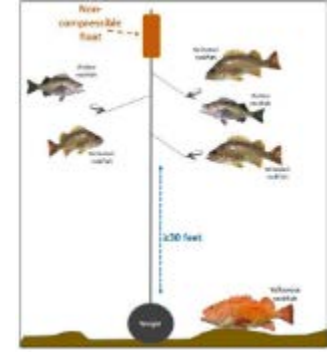
Port	Total groundfish angler-trips	Longleader angler-trips	Traditional groundfish angler-trips	Percent longleader
Astoria	96	0	96	0.0%
Garibaldi	8,435	1,183	7,252	14.0%
Pacific City	1,670	0	1,670	0.0%
Depoe Bay	16,361	1,658	14,703	10.1%
Newport	14,879	699	14,180	4.7%
Florence	0	0	0	0.0%
Win. Bay	0	0	0	0.0%
Charleston	3,297	78	3,219	2.4%
Bandon	2,214	0	2,214	0.0%
Port Orford	0	0	0	0.0%
Gold Beach	780	0	780	0.0%
Brookings	3,561	0	3,561	0.0%
Charter Total	51,293	3,618	47,675	7.1%



2018 Longleader fishery: private effort

Port	Total groundfish angler-trips	longleader angler-trips	Traditional groundfish angler-trips	Percent longleader
Astoria	547	0	547	0.0%
Garibaldi	5,072	77	4,995	1.5%
Pacific City	3,598	0	3,598	0.0%
Depoe Bay	3,172	0	3,172	0.0%
Newport	8,957	54	8,903	0.6%
Florence	4	0	4	0.0%
Win. Bay	585	497	88	85.0%
Charleston	8,665	217	8,448	2.5%
Bandon	1,714	48	1,666	2.8%
Port Orford	400	0	400	0.0%
Gold Beach	2,586	9	2,577	0.3%
Brookings	14,534	0	14,534	0.0%
Private Total	49,834	902	48,932	1.8%

2018 Longleader fishery: species caught



SPECIES	NUMBER CAUGHT	% TOTAL LL CATCH
Yellowtail	23,627	56%
Widow	6,826	16.2%
Canary	6,181	14.6%
Bocaccio	392	0.93%
Silvergray	62	0.15%
Redstripe	35	0.08%
Greenstriped	25	0.06%
Chilipepper	10	0.02%
Deacon	9	0.02%





2019 Recreational groundfish fishery regulations

- **Commission action:** adopt season structure, bag limits
- Public input:
 - Meetings in Brookings, North Bend, Newport (webcast), Salem
 - Individuals contacted Marine Resources Program staff
 - Written comment to Commission
- Goals:
 - Year-round season
 - Bag limit high enough to attract/maintain participation
 - Promote diverse opportunities within the fishery



2019 Seasonal depth restriction

Staff recommendation:

- Traditional bottomfish fishing prohibited seaward of 40 fathoms May 1 -Sept. 30
 - More conservative than new federal regs (June 1 - Aug 31), consistent with intent to proceed cautiously with allowing increased impacts to yelloweye RF
 - First time April will be open to all-depth fishing since 2003
 - First time fishing between 30 – 40 fm during depth restriction will be allowed since 2011





2019 General marine bag limit

Staff recommendation: 5 fish (status quo)

- Sub-bag of 1 cabezon, open Jul. 1 through HG attainment or December 31
- Projections w/5-fish bag, based on 2016-18 effort levels and catch rates:

Species/Management Group	TOTAL	LIMIT	±
BLACK RF	348.9	376.9	93%
BLUE & DEACON RF	15.1	80.7	19%
CABEZON	20.7	16.1	128%
GREENLINGS	3.5	27.1	13%
Minor NSRF	14.0	11.3	124%
CANARY RF	35.9	70.9	51%
YELLOW EYE RF	3.1	7.1	43%

- Cabezon and minor nearshore rockfish impacts could exceed quotas
- Yelloweye rockfish impacts could be well below new quota



2019 General marine bag limit (continued)

Sub-bag limit considerations

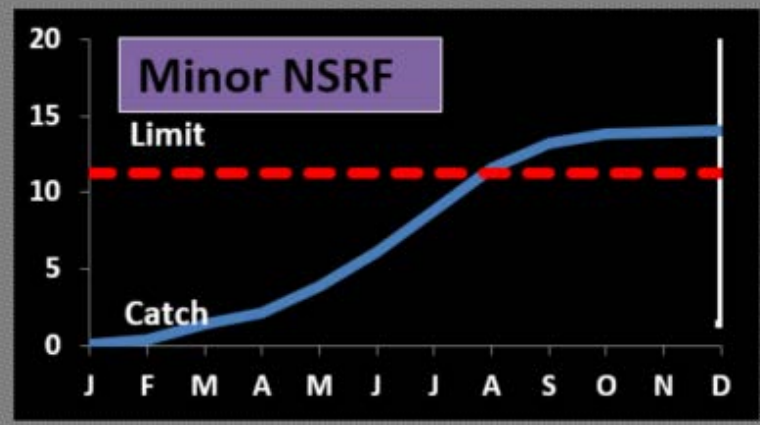
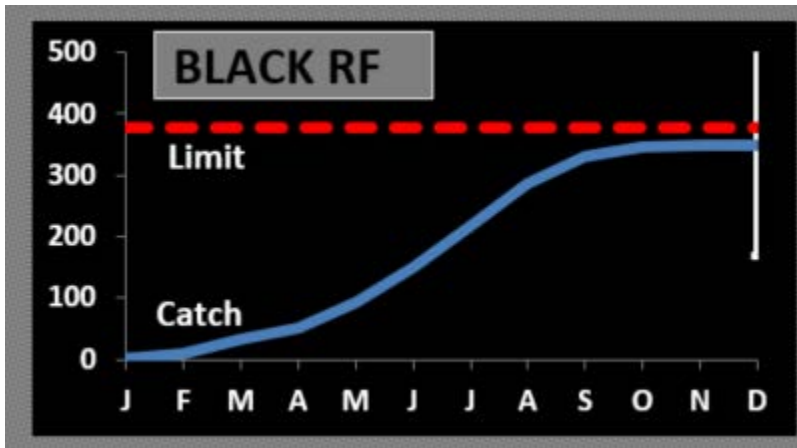
- Objectives: stay within quotas; increase overall bag limit if possible
- Considerations:
 - Effects of subbags are difficult to model
 - Most anglers catch < 1 minor nearshore RF per trip
 - Black RF are the most frequently encountered species; subbag had little effect when used in 2016
 - Some anglers concerned about adding complexity/confusion with sub-bags
 - Limits are not all alike: black RF is “hard”, but MNRF is “softer” (b/c shared with WA & CA) and carries less risk of fishery closure
- Summary of modeling results for several scenarios:
 - With a 5 fish total bag limit & 3-MNRF sub-bag, MNRF ↓ by 0.5 mt
 - 6 fish total bag limit & 1-MNRF sub-bag: BLRF projected to be slightly > quota (379 mt), MNRF over (13 mt)
 - Caution: beware “false precision” in model output; catch projections are highly uncertain



2019 General marine bag limit (continued)

Sub-bag limit considerations

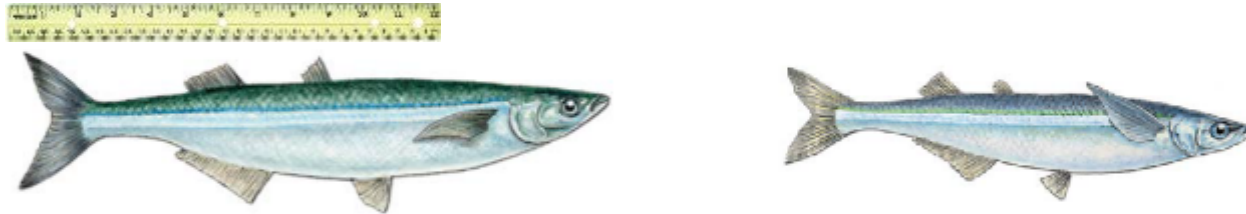
Right: projections for 5-fish bag. Note white error bars – very wide range of potential outcomes



- Basis for staff recommendation:
 - Overall bag limit is driven by risk of exceeding black RF quota, not by whether a MNRF sub-bag is used
 - 5 fish bag offers the best chance of not having to reduce it to less than 5 inseason
 - Can ↑ bag inseason if enough quota (likely not comfortable until after Labor Day)
 - Fishing out to 40 fm in summer, and all-depth in April, could ↓ MNRF
 - **A MNRF subbag—or non-retention—may be needed inseason to stay within quota**
 - If so, sub-bag would likely be 1 MNRF, effective in summer

Move jacksmelt and topsmelt from general marine bag limit to baitfish bag limit

Silversides, Atherinopsidae



Left: Jacksmelt, *Atherinopsis californiensis*. Right: Topsmelt, *Atherinops affinis*. Photo credit: NOAA Fisheries Service (both).

- Jacksmelt and topsmelt, aka “silversides”, are infrequently encountered by Oregon anglers when fishing for herring or other baitfish
- Total OR catch since 2005 has been ~1,000 fish (CA catch >6 million)
- Recommend moving to the “baitfish” bag (herring, anchovy, sardine, true smelts), 25 lbs in aggregate
- Better aligns with species groupings. No impact to other species (eulachon, salmon, other marine species) expected.

Offshore longleader fishery



Staff recommendation:

- Add blue/Deacon rockfish to the species allowed in the 10-fish bag limit
 - Much higher 2019 limit for blue/Deacon allows increased access & retention
 - ODFW research suggests blue/Deacon don't survive release as well as some other species; allowing retention in longleader fishery could reduce wastage



Lingcod bag limit

Staff recommendation:

- 2 lingcod (status quo)
- Yelloweye rockfish bycatch has been the reason for restricted access to lingcod.
- 2019 yelloweye quota will be less constraining, but difficult to predict how much bycatch will occur under more liberal regulations. Starting 2019 with a 2-lingcod bag is precautionary.



Flatfish bag limit

Staff recommendation:

- 25 flatfish bag limit (status quo)
- Flatfish trips may not be combined with longleader trips, but may be combined with traditional bottomfish and other trips unless specified otherwise inseason





Summary of staff recommendations:

- Adopt federal groundfish regulations for 2019-2020 by reference
- Adopt commercial and recreational groundfish harvest guidelines for 2019 as shown on slide 10
- Adopt bimonthly trip limits for the commercial nearshore fishery as shown on slide 13
- For the recreational groundfish fishery:
 - Change the seasonal depth restriction timing to May 1 – Sep 30 and the line to 40 fathoms (slide 21),
 - Move silversides to the baitfish bag (slide 25), and
 - Add blue/deacon rockfish to the species allowed in the longleader bag limit (slide 26)
 - Retain status quo for remaining regulations

End

